

QTC®

QTC®  
Quick-Tool-Change

## RPG 4.5, RPG 8.6

### Tube Squaring Machines

The clean and high value solution for specific welding preparations

Designed for burr-free squaring of thin-walled stainless steel tubes up to OD 114.3 mm (4.5") or OD 219.1 mm (8.6"). Clean and secure working area with clear view cutting head. Machine with removable bench stand.

#### Advantages:

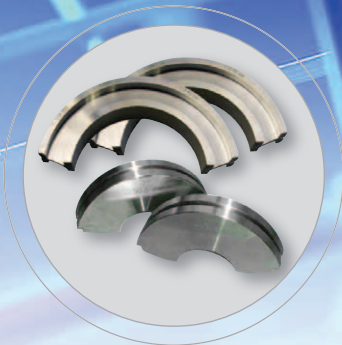
- Squaring tube ends with high-quality surface
- Burr-free and square
- Beveling (45°/35°) possible with a special holder
- Quick clamping system for tools, clamping shells and tubes
- Preparation of thin-walled stainless steel tubes (V4A)
- High-performance coated tool bit with two cutting edges
- Built-in electronic speed regulation
- Micrometer feed for optimum results
- No additional tools required for operation
- Portable machine for a mobile and secure application

#### Your benefits:

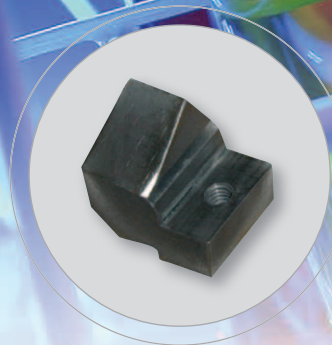
- Reduced tool costs
- Reduced manufacturing costs
- Increased productivity
- Extremely durable



Application



A wide range of **stainless steel clamping shells\*** (for RPG 8.6 also made from **aluminum**). Extremely durable. The two-piece-design with click mechanism ensures accurate centring and quick clamping shell change without any tools.



Including **tool holder WH:** Usable for all RPG 4.5 and RPG 8.6 machines.  
**Code 790 038 320**  
**Tool holder for beveling** (45°/35°) see table below.



Including **multifunctional tool MFW:** Two-sided tool bit with high-performance Bal-init® Futura protective coating against tool wear. Usable for all machines of the RPG series.  
**Code 790 038 314**



Including **durable storage and shipping case:** High-quality blue transportation case with insert. Very sturdy design.

## Tube Squaring Machines

Technical data	RPG 4.5	RPG 8.6
Dimensions [mm]	525 x 256 x 226	630 x 390 x 340
Dimensions [inch]	20.7 x 10 x 8.9	24.8 x 15.4 x 13.4
Weight (without clamping shells)	10.2 kg (22.5 lbs)	20.5 kg (45.2 lbs)
Power rating [W]	1010	1010
Power versions	Code	Code
230 V, 50/60 Hz EU	790 038 001	790 039 001
110 V, 50/60 Hz EU	790 038 003	790 039 003
Speed (max. idling speed) [min <sup>-1</sup> ]	8 - 52	7 - 18
Vibration level according to EN 28662, Part 1 [m/s <sup>2</sup> ]	2.5	2.5
Noise level at the workplace [dB (A)]	Idle running approx. 83	Idle running approx. 83

Working range	RPG 4.5	RPG 8.6
Tube OD [mm]	12.7 - 114.3	50.8 - 219.1
Tube OD [inch]	0.5 - 4.5	2 - 8.6
Wall thickness max. [mm]	3	3.6
Wall thickness max. [inch]	0.118	0.141
Tube materials	High-alloy steels, unalloyed and low-alloy steels and aluminum. Others on request.	

\* Please check the outer diameter of the pipes before ordering the clamping shells. The different norms sometimes involve a special size (particularly for pipes in accordance with DIN 2430).

The technical data are not binding. They are not warranted and characteristics are subject to change. Please consult our General Conditions of Supply.

### Included with the machine

- 1 Tube Squaring Machine RPG
- 1 Durable storage and shipping case
- 1 Tool holder (Code 790 038 320)
- 1 Multifunctional tool (Code 790 038 314)
- 1 Tool set
- 1 Set of operating instructions and spare parts list

### Accessories

Dimensionally specific clamping shells\*\* (stainless steel). Please enquire.  
Code 790 038 320

Tool holder WH12-V-45°:  
Code 790 038 280

Tool holder WH12-V-35°:  
Code 790 038 282

Please enquire about further tool holders for diverse beveling angles.

Multifunctional tool MFW-P-2  
Code 790 038 314

### Application range

Tube OD [mm]: 12.0 - 219.1  
Tube OD [inch]: 0.472 - 8.625

Tube OD [mm]: 50.8 - 219.1  
Tube OD [inch]: 2.000 - 8.625

For squaring.

For beveling (45°)

For beveling (35°)

Usable for all machines of the RPG series regardless of dimension.

Stamp of distributor:

© Orbitalum Tools GmbH (02.2010)

Orbitalum Tools GmbH, Josef-Schuettler-Str. 17, 78224 Singen, Germany

#### Sales Contact:

Tel. +49 (0) 77 31 792-786 up to -790  
Fax +49 (0) 77 31 792-524  
tools@orbitalum.com  
www.orbitalum.com

#### Repair Service:

Josef-Schuettler-Str. 17  
78224 Singen, Germany  
Tel. +49 (0) 77 31 792-764  
Fax +49 (0) 77 31 792-524